

Annwyl Gyngorydd,

**PWYLLGOR CYNLLUNIO - DYDD IAU, 22AIN MEHEFIN, 2023**

Gweler yn amgaaedig, yr cynlluniau ar gyfer y cyfarfod uchod.

Rhif ar yr Agenda	Eitem
----------------------	-------

3.	<b><u>PENDERFYNU AR GEISIADAU CYNLLUNIO</u></b> (Tudalennau 3 - 44)
----	---------------------------------------------------------------------

Yn gywir,

*Wendy Walters*

Prif Weithredwr

Amg.

**Wendy Walters**

Prif Weithredwr, Neuadd y Sir,  
Caerfyrddin, Sir Gaerfyrddin SA31 1JP  
Chief Executive, County Hall,  
Carmarthen, Carmarthenshire SA31 1JP



BUDDSODDWR | INVESTORS  
MEWN POBL | IN PEOPLE

Mae croeso i chi gysylltu â mi yn y Gymraeg neu'r Saesneg

You are welcome to contact me in Welsh or English

Mae'r dudalen hon yn wag yn fwriadol

# Y Pwyllgor Cynllunio / Planning Committee

22/06/2023

Lle a Chynaliadwyedd - Y Gwasanaethau Cynllunio  
Place and Sustainability - Planning Services

Lle a Seilwaith | Place and Infrastructure

Tudalen 3

Cyngor **Sir Gâr**  
**Carmarthenshire**  
County Council



Eitem Rhif 3

**Ceisiadau yr argymhellir  
eu bod yn cael eu  
cymeradwyo**

**Applications  
recommended for  
approval**

# PL/05353

Paul Roberts

Lle a Chynaliadwyedd - Y Gwasanaethau Cynllunio  
Place and Sustainability - Planning Services

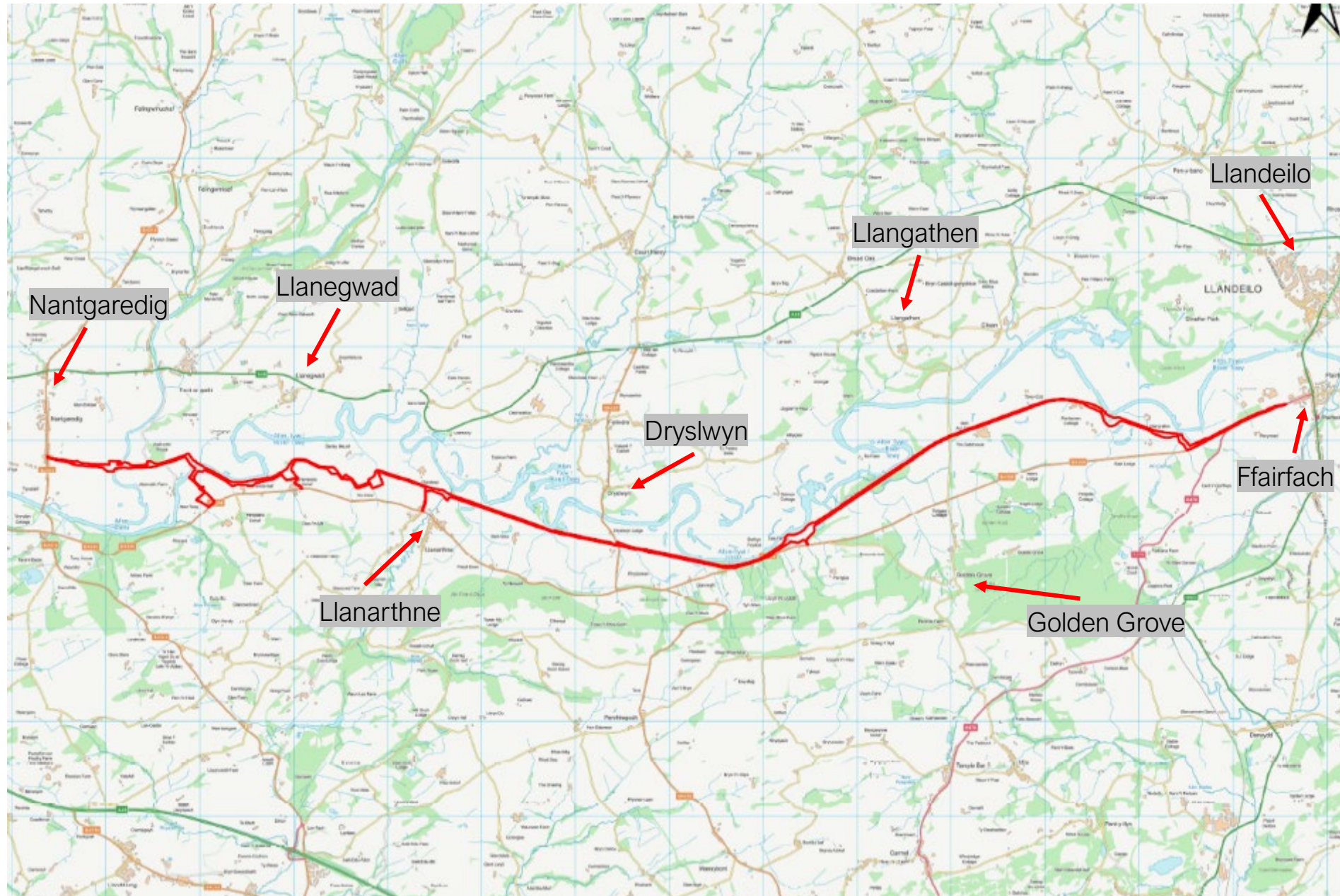
Lle a Seilwaith | Place and Infrastructure

Tudalen 5

Cyngor **Sir Gâr**  
**Carmarthenshire**  
County Council

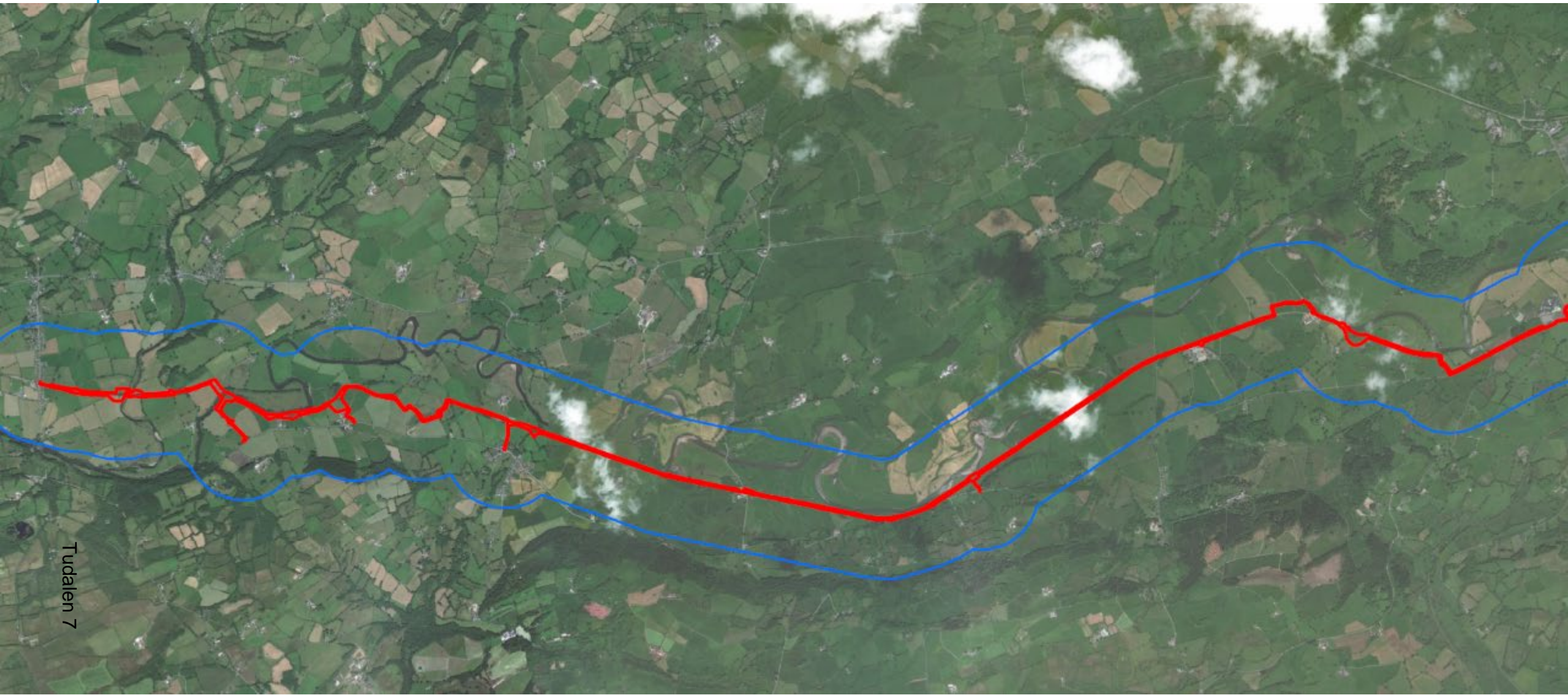


# PL/05353 Wider location Plan





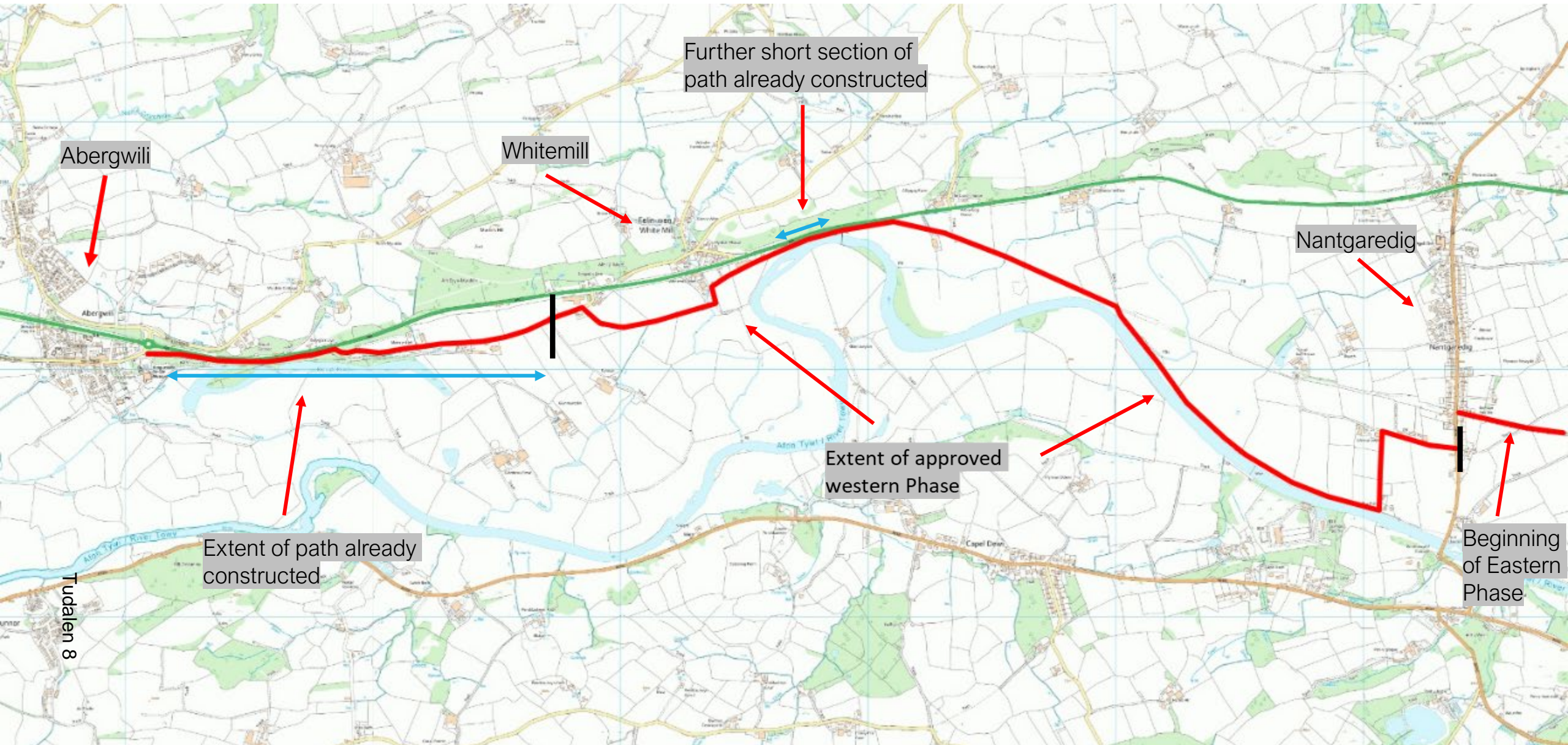
# PL/05353 Aerial Photograph



Tudalen 7



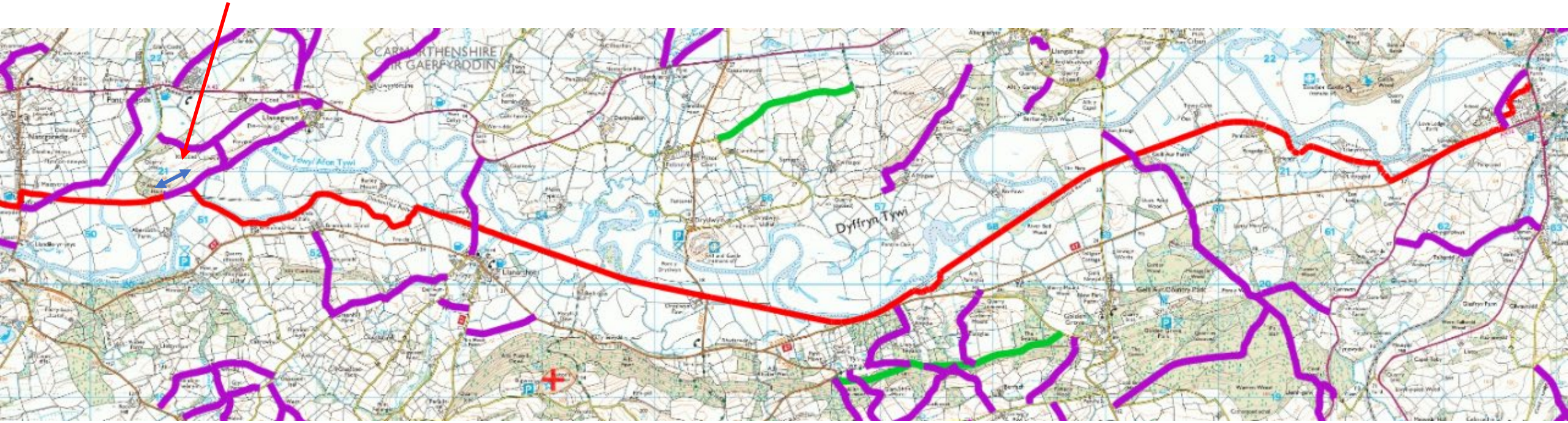
# PL/05353 Approved/built elements of western phase of path





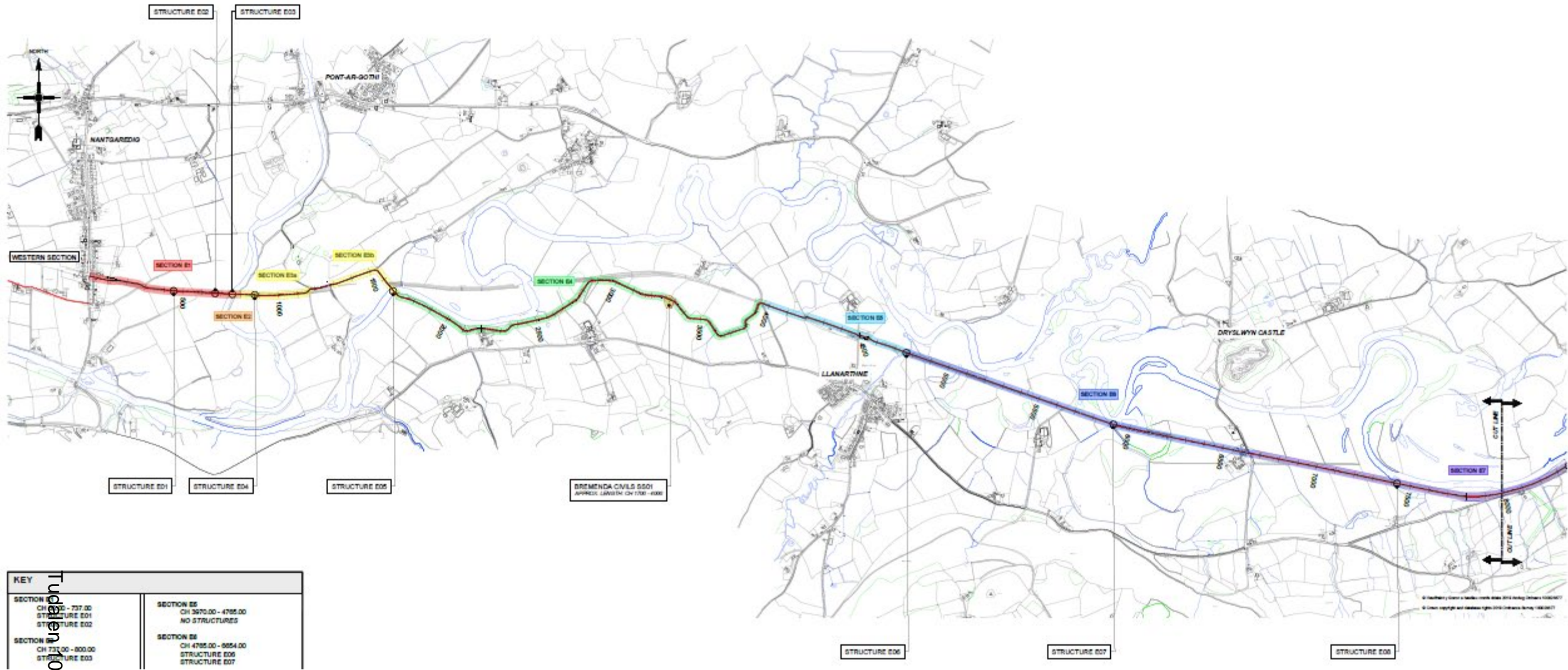
# PL/05353 Interaction with existing Public Rights of Way Network

Section of path that  
utilises part an existing  
public right of way





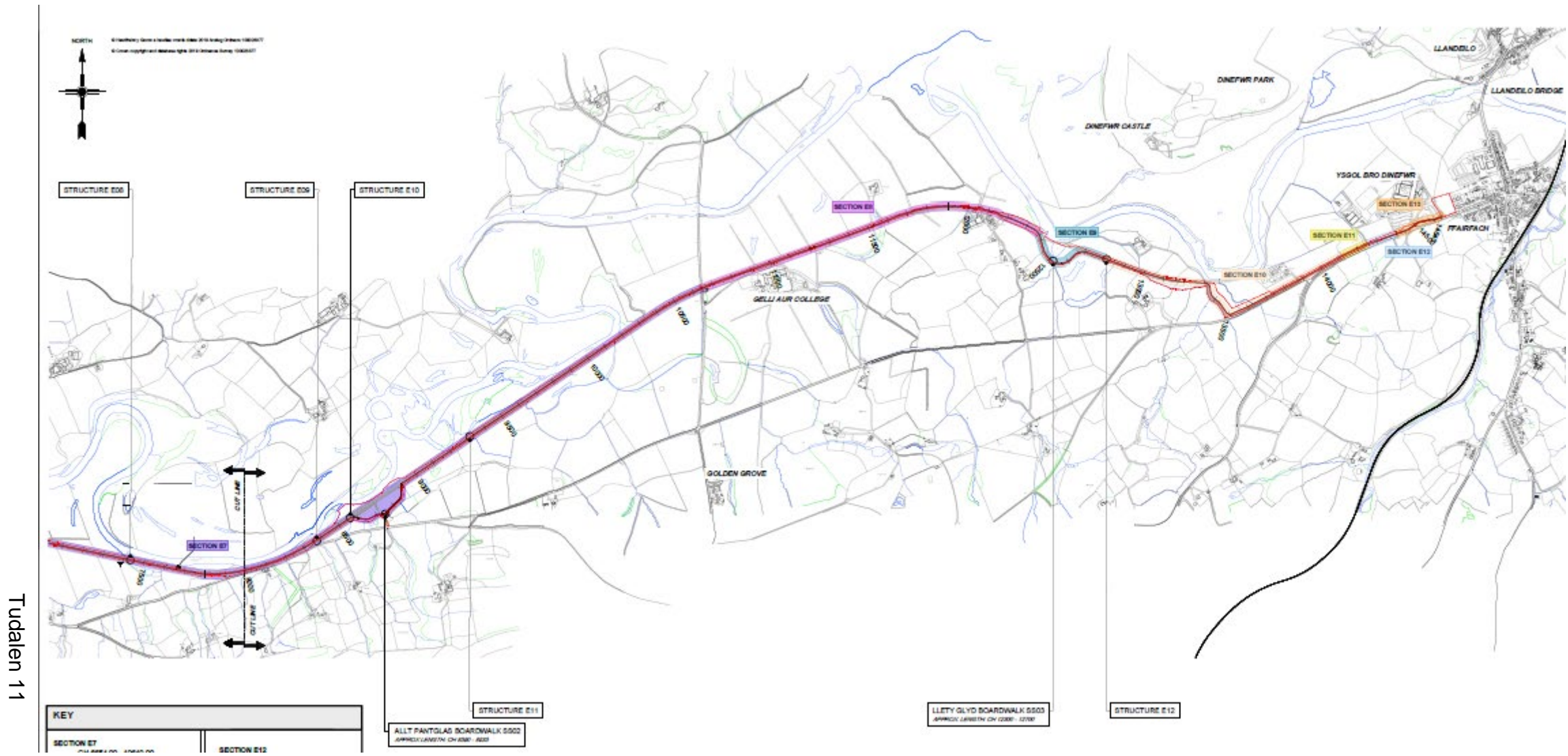
# PL/05353 Route Design (Nantgaredig – Dryslwyn/Golden Grove)



Tudalen 10

© Cofrestru a Chymal y Castellau Cymru 2014. Cofrestru a Chymal y Castellau Cymru. All rights reserved. © Cofrestru a Chymal y Castellau Cymru 2014. Cofrestru a Chymal y Castellau Cymru. All rights reserved.

# PL/05353 Route Design (Dryslwyn/Golden Grove – Ffairfach)



Tudalen 11

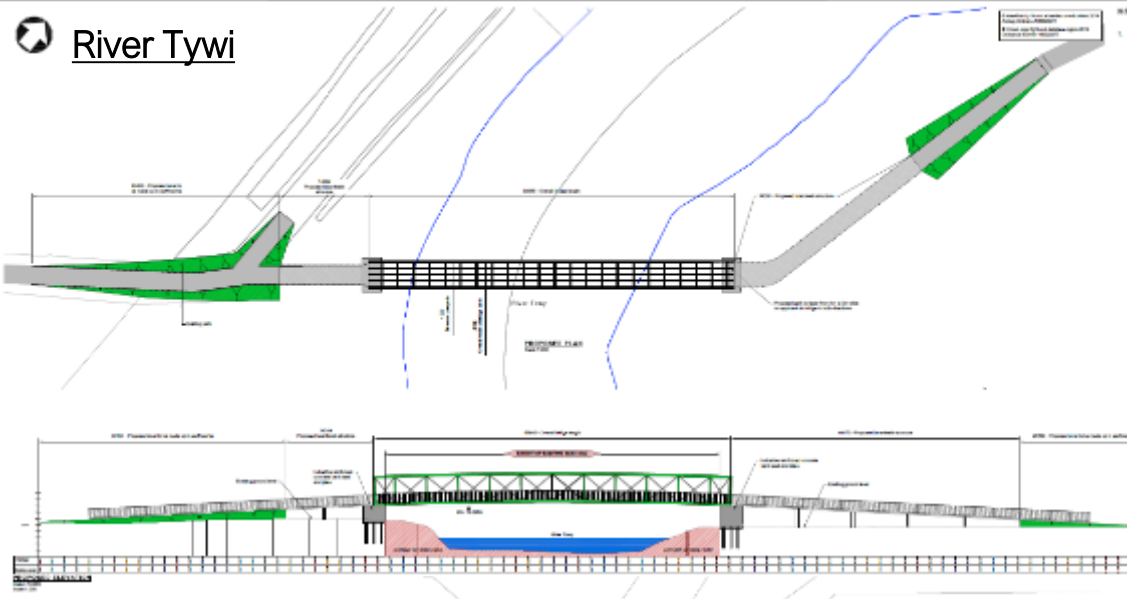




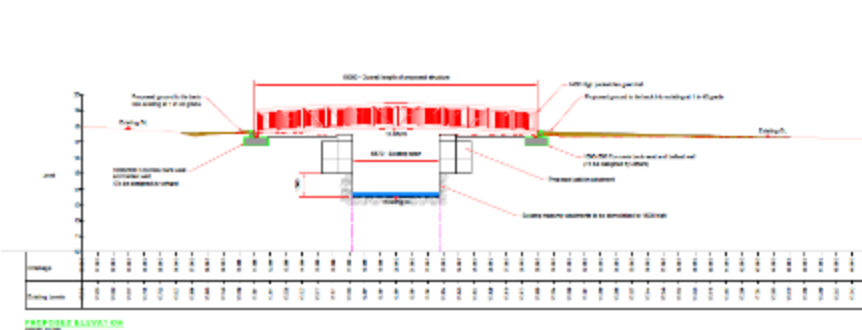
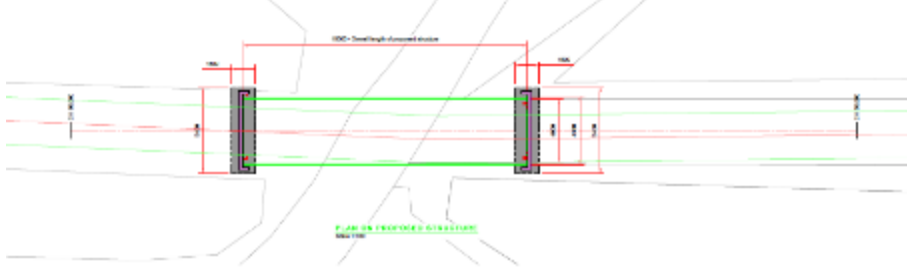
# PL/05353 Examples of Structures along route

## New bridges over River Tywi & Gwynon

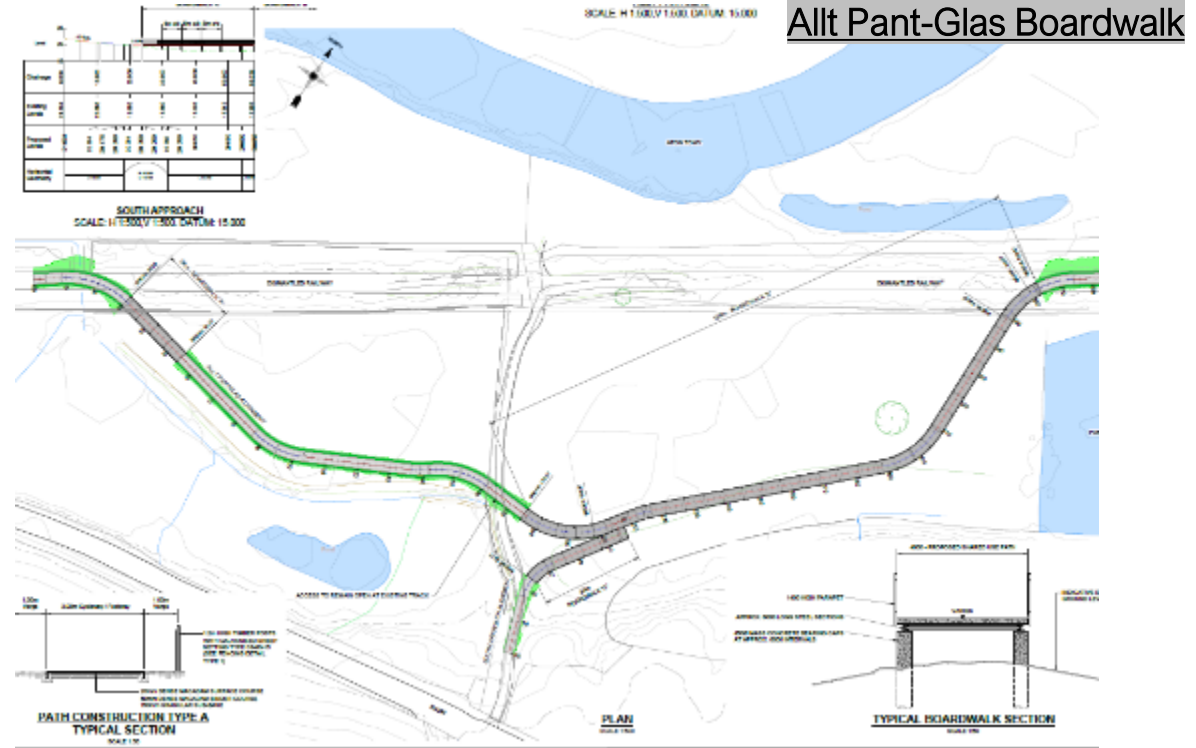
### River Tywi



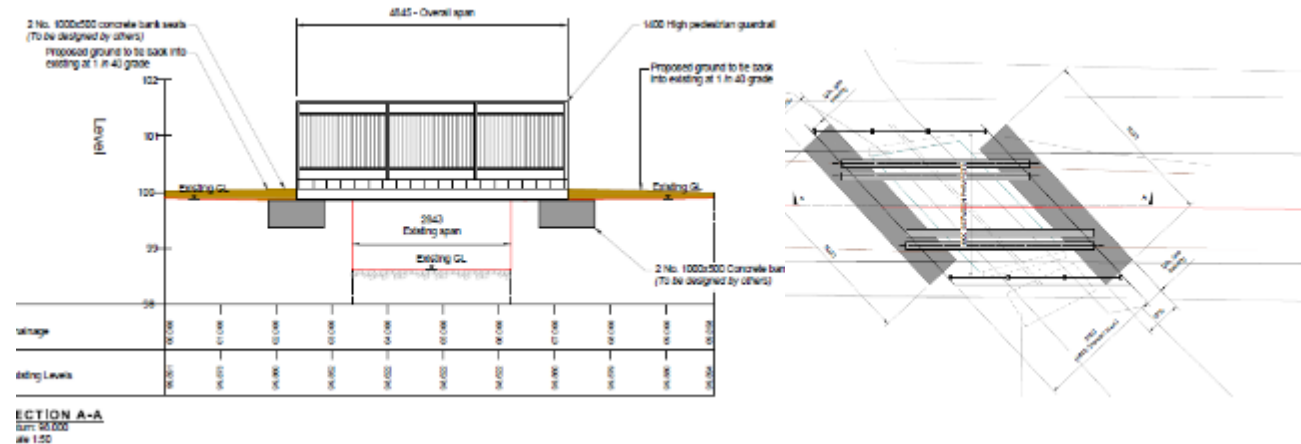
### River Gwynon



Tudalen 13

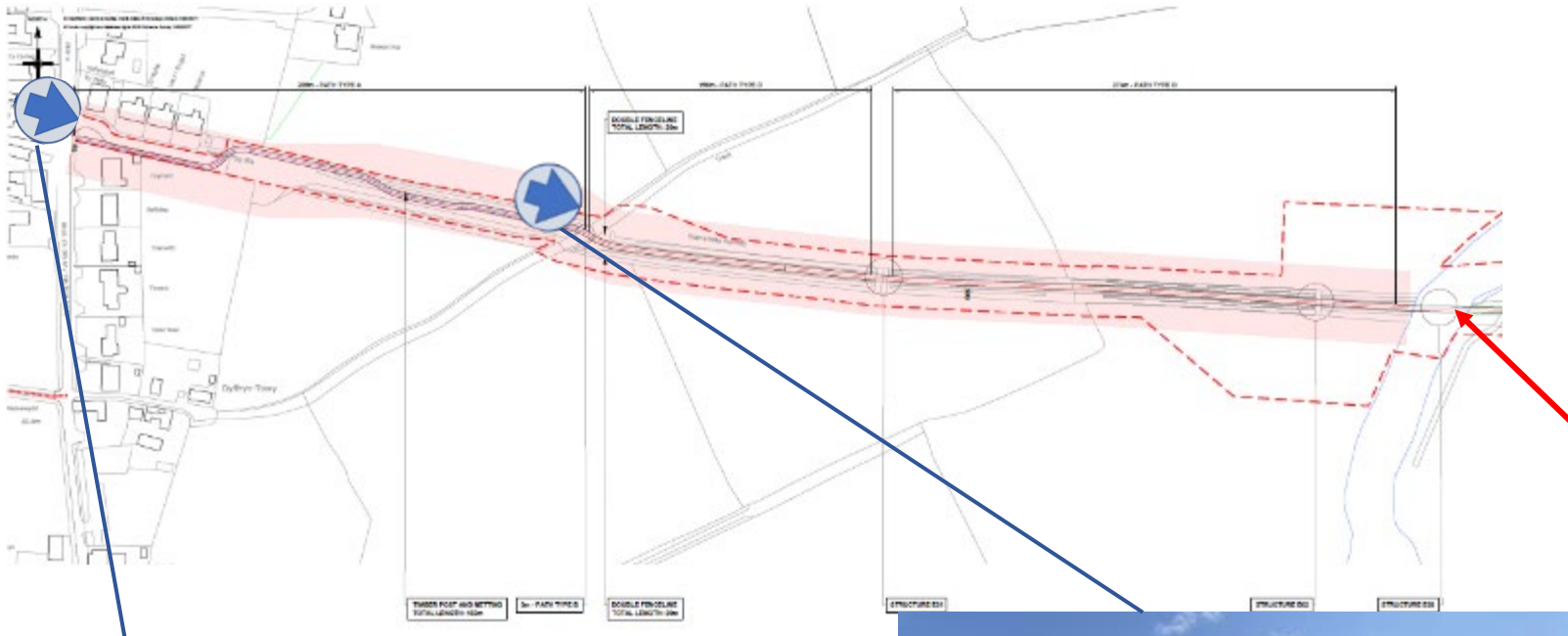


## Example of smaller bridge over unnamed stream

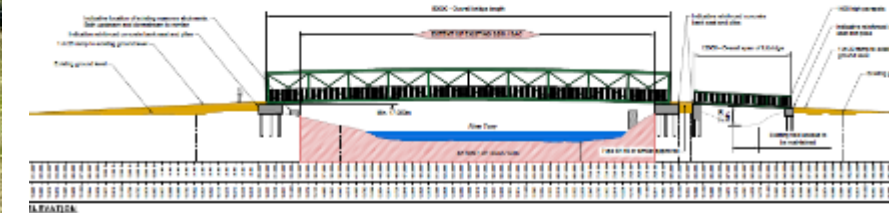
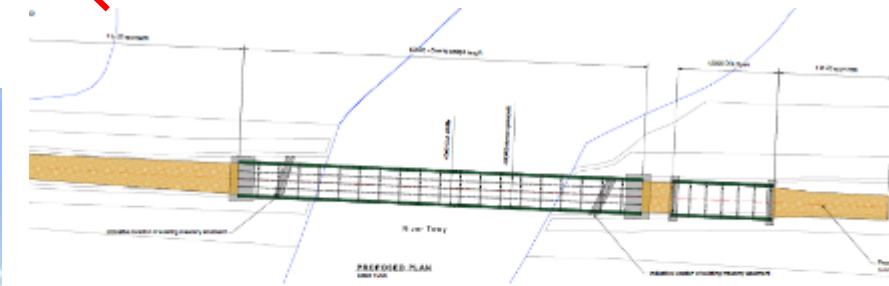


# PL/05353 Detailed design and viewpoints

Western end - Nantgaredig



Bridge over River Cothi





# PL/05353 Detailed design and viewpoints

## Abercothi House



Tudalen 15





# PL/05353 Detailed design - viewpoints

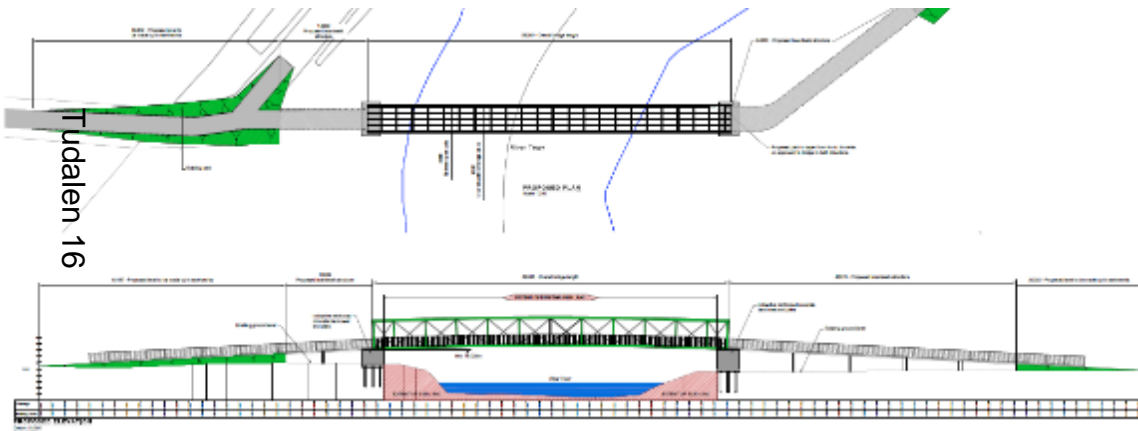
## Bremenda Isaf



Proposed bridge location



## Bridge over River Tywi



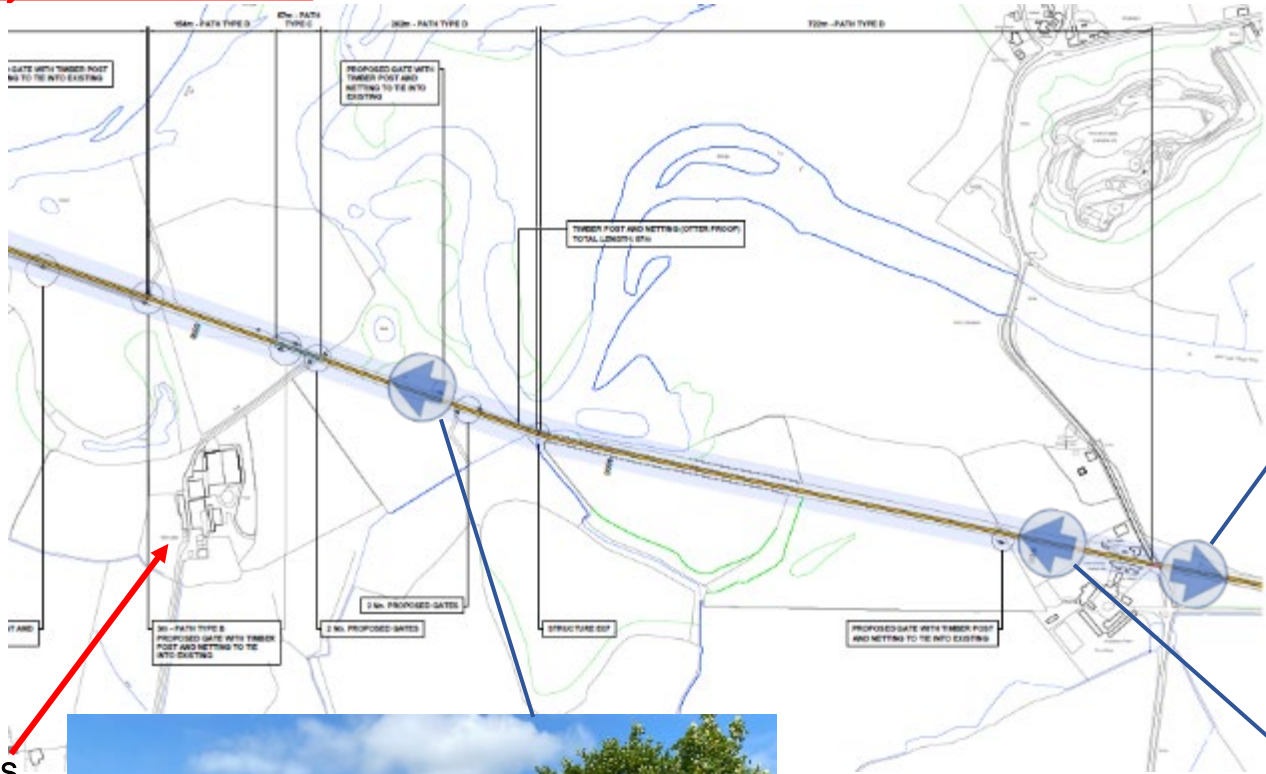






# PL/05353 Detailed design - viewpoints

Dryslwyn / Belli Glas Farm



Belli Glas Farm

Tudalen 18



# PL/05353 Detailed design - viewpoints

East of Dryslwyn



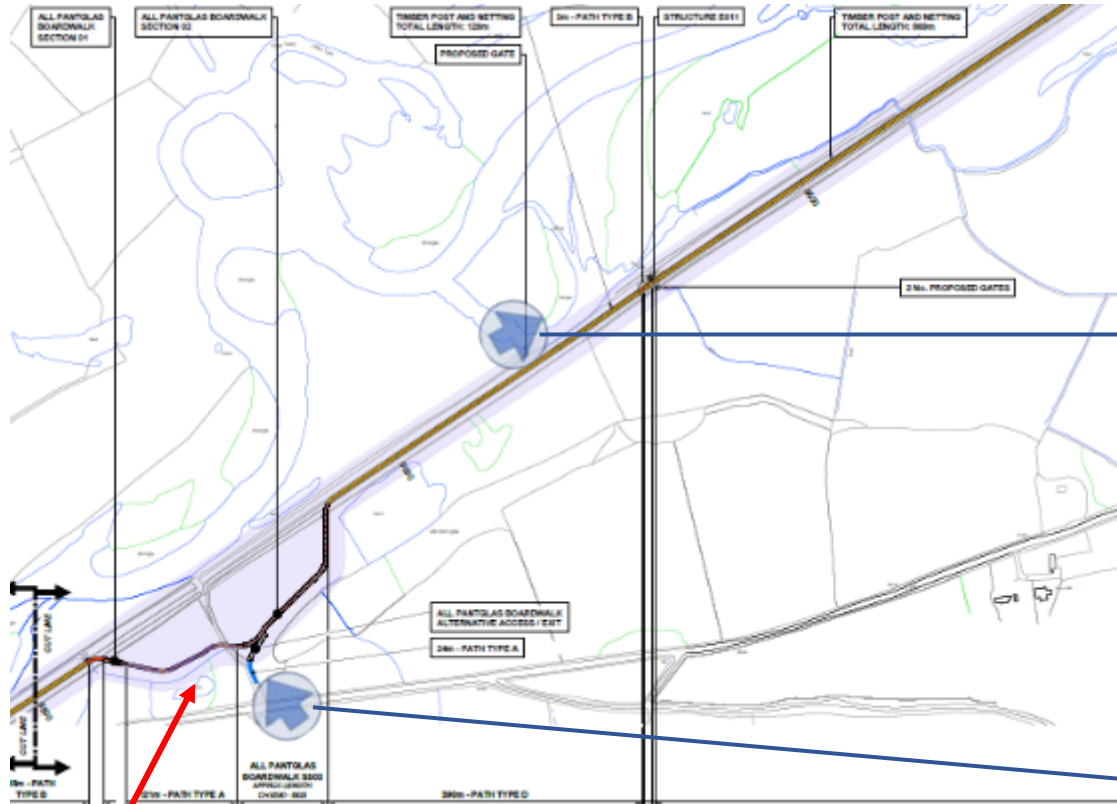
Paxton's Tower /  
Dryslwyn Castle





# PL/05353 Detailed design - viewpoints

Allt Pant-glas



Allt Pant-glas boardwalk

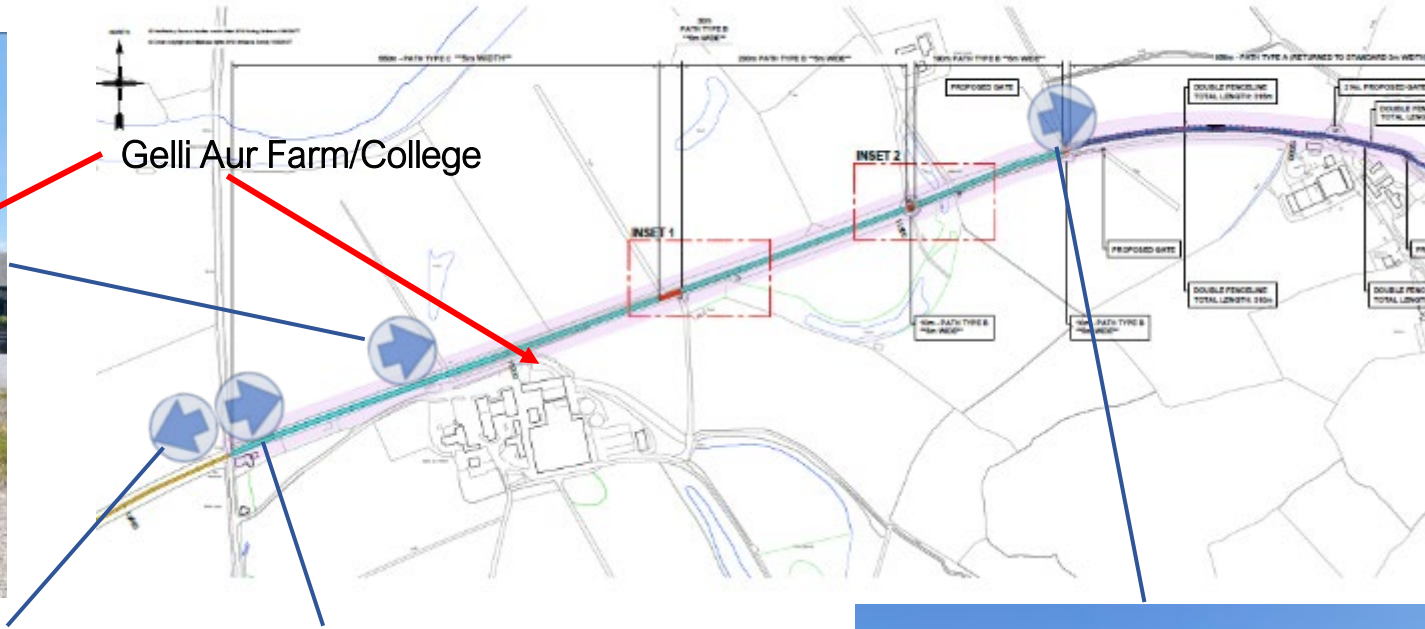
Taldalen 20





# PL/05353 Detailed design - viewpoints

## Golden Grove / Pentrecwm Farm



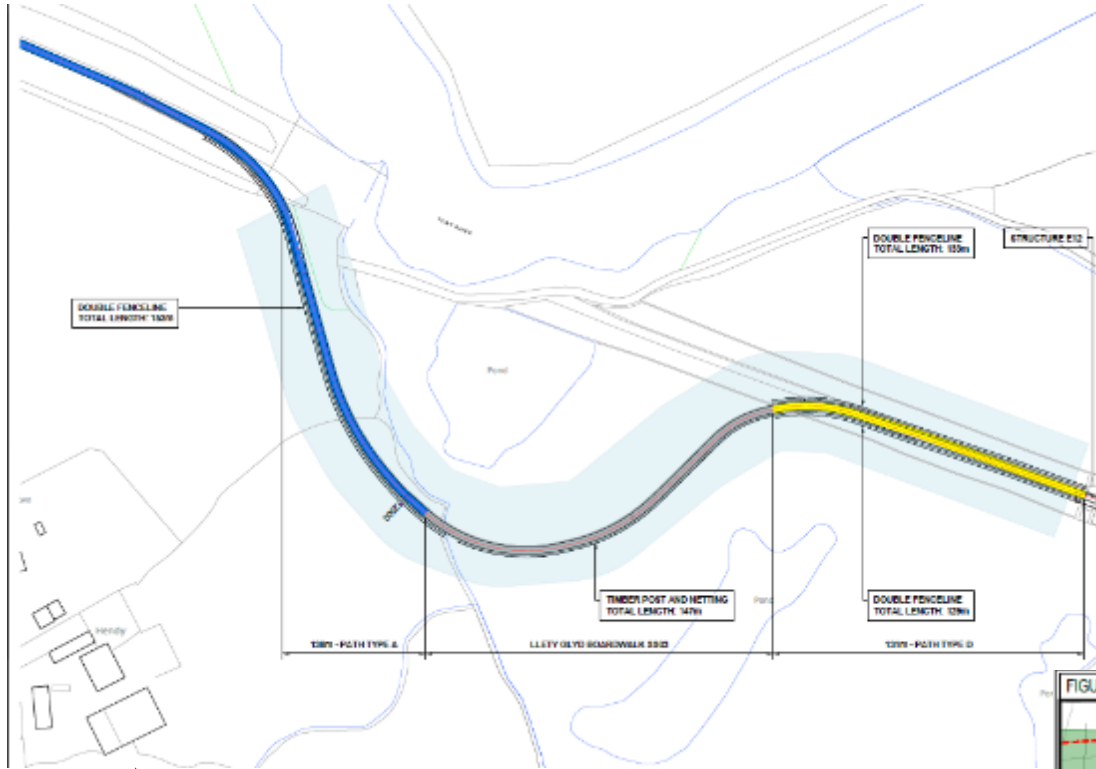
Pentrecwm Farm





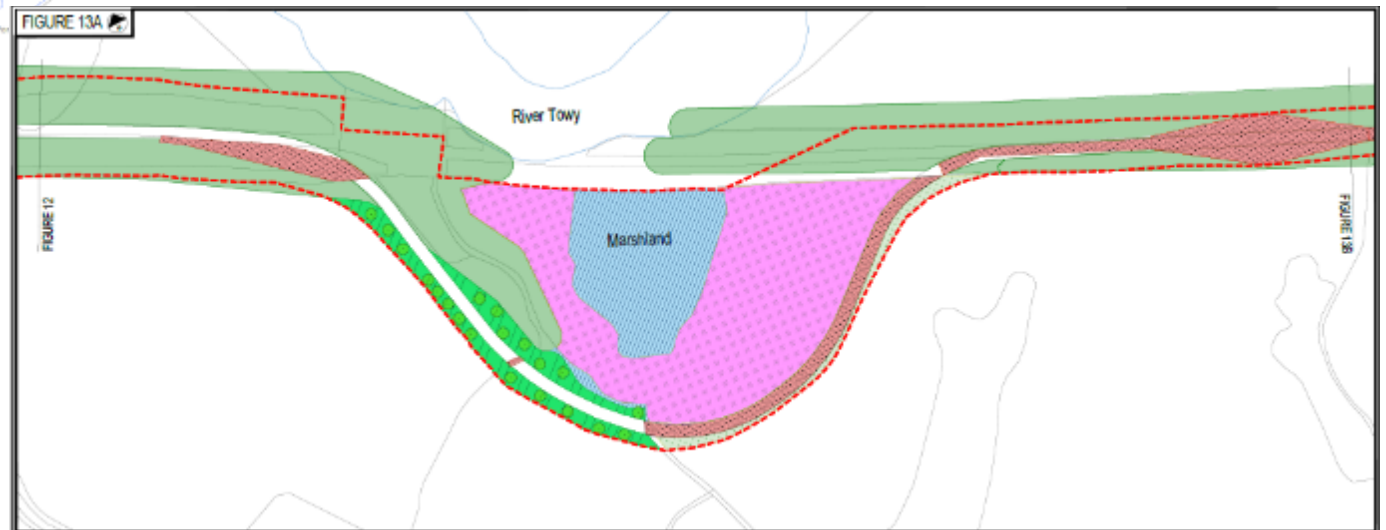
# PL/05353 Detailed design

## Llety Glyd boardwalk



Example of proposed landscaping

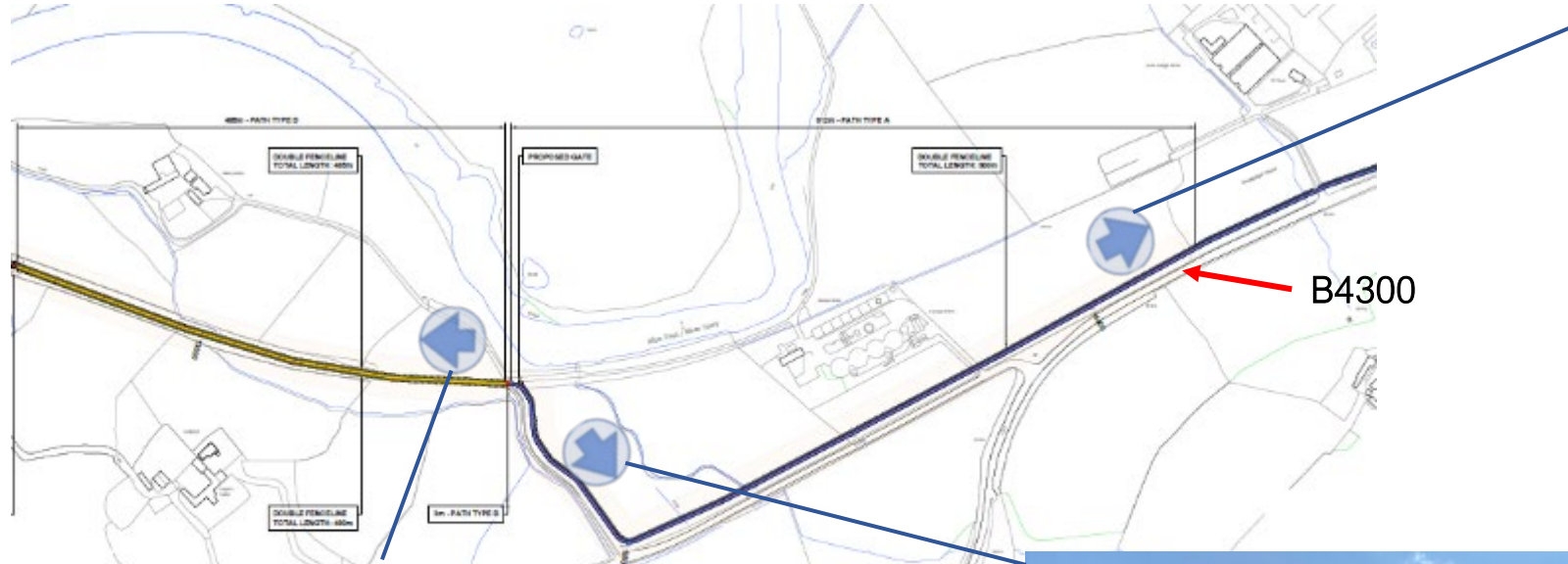
Tudalen 22  
Hendy Farm





# PL/05353 Detailed design - viewpoints

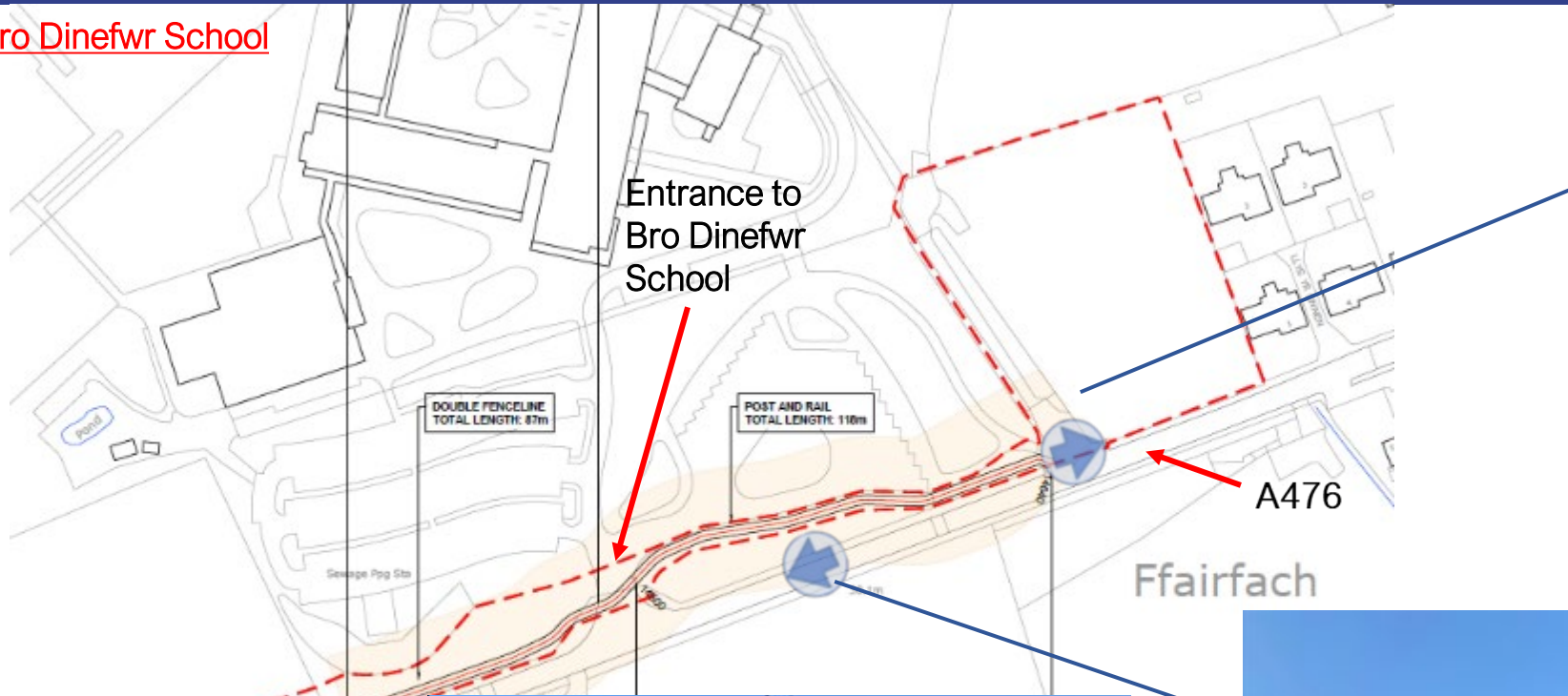
Llety Glyd Farm





# PL/05353 Detailed design - viewpoints

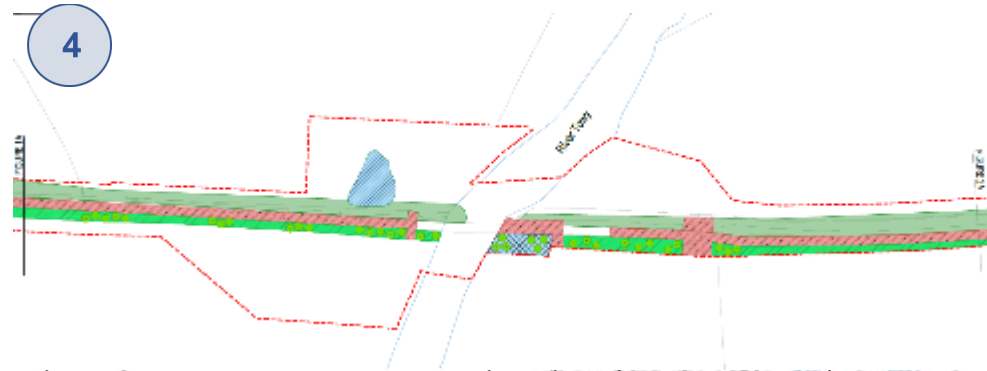
Bro Dinefwr School



Tudalen 24



# PL/05353 Examples of Landscaping along route

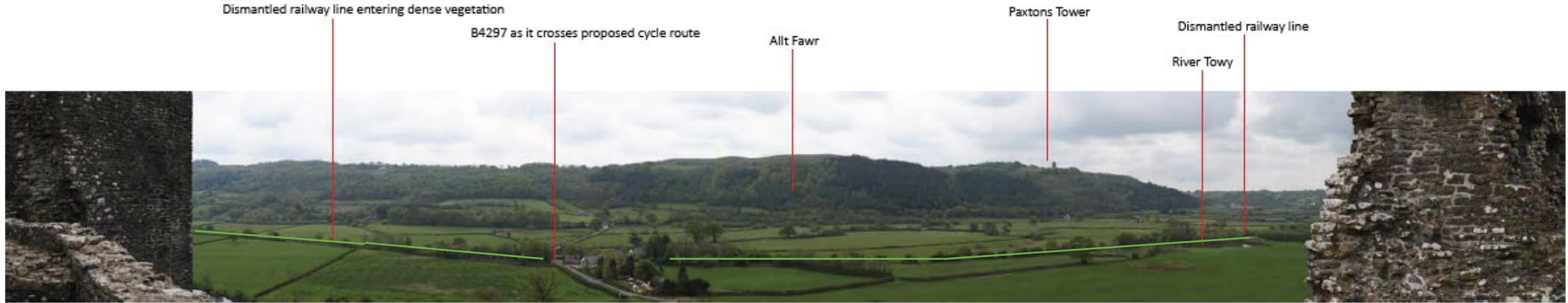




# PL/05353 Viewpoints of site from Dryslwyn and Dinefwr Castles

## Dryslwyn Castle

Approximate extent of Proposed Scheme



Approximate extent of Proposed Scheme

## Dinefwr Castle

Tudalen 26



# PL/05353 Flood Management Measures

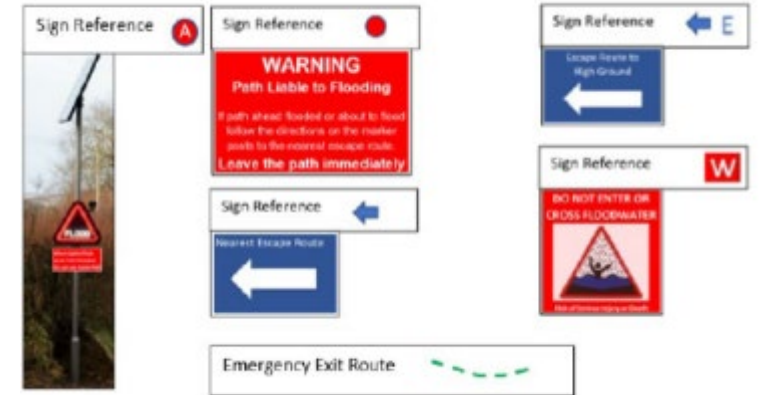
## Nantgaredig - Llanarthne



## Llanarthne - Dryslwyn



## Dryslwyn - Ffairfach



Tudalen 27





**Ceisiadau yr argymhellir  
eu bod yn cael eu  
gwrthod**

**Applications  
recommended for  
refusal**



# PL/05786

**Charlotte Ford**

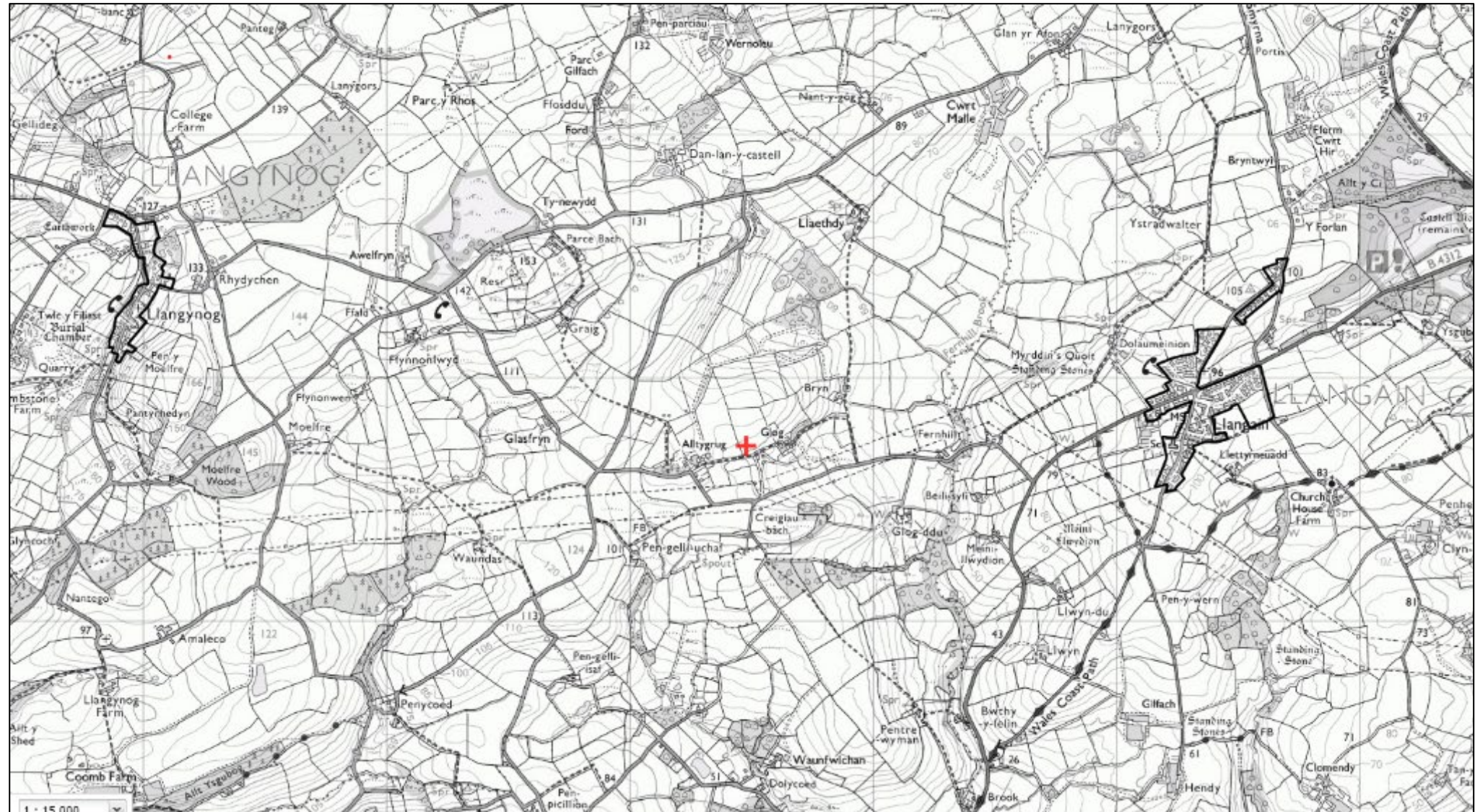
**Lle a Chynaliadwyedd - Y Gwasanaethau Cynllunio  
Place and Sustainability - Planning Services**

**Lle a Seilwaith | Place and Infrastructure**

Tudalen 30

Cyngor **Sir Gâr**  
**Carmarthenshire**  
County Council

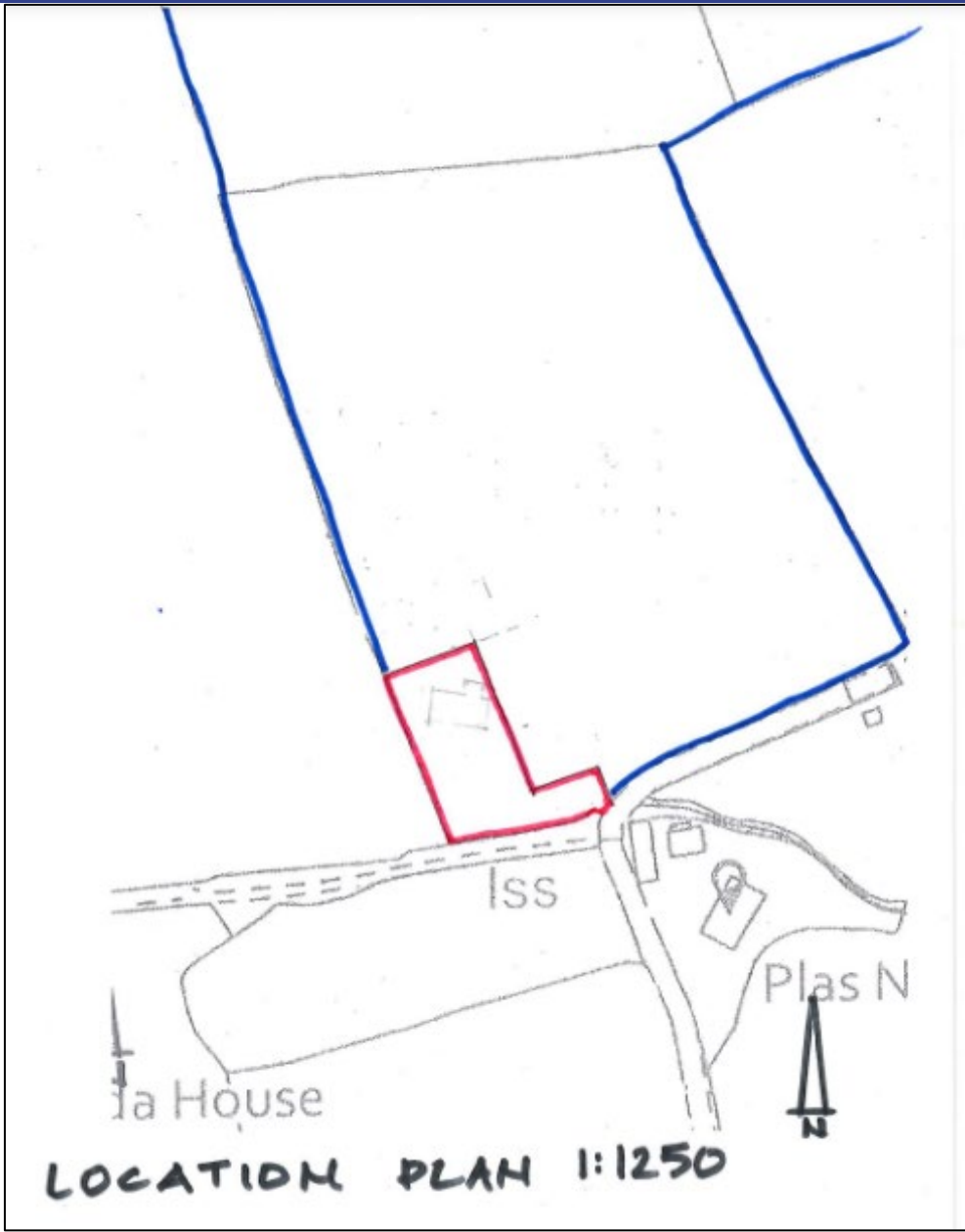




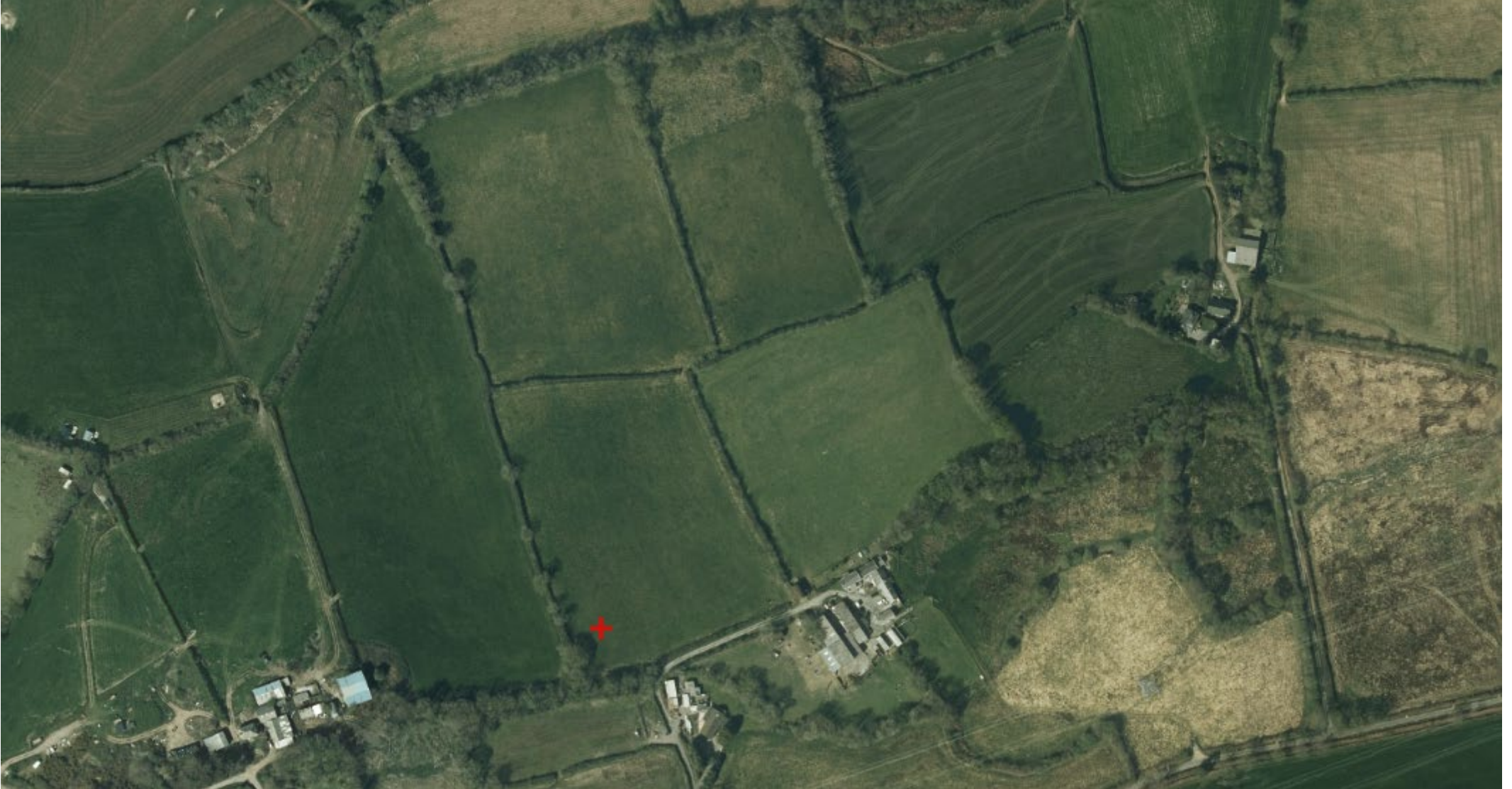




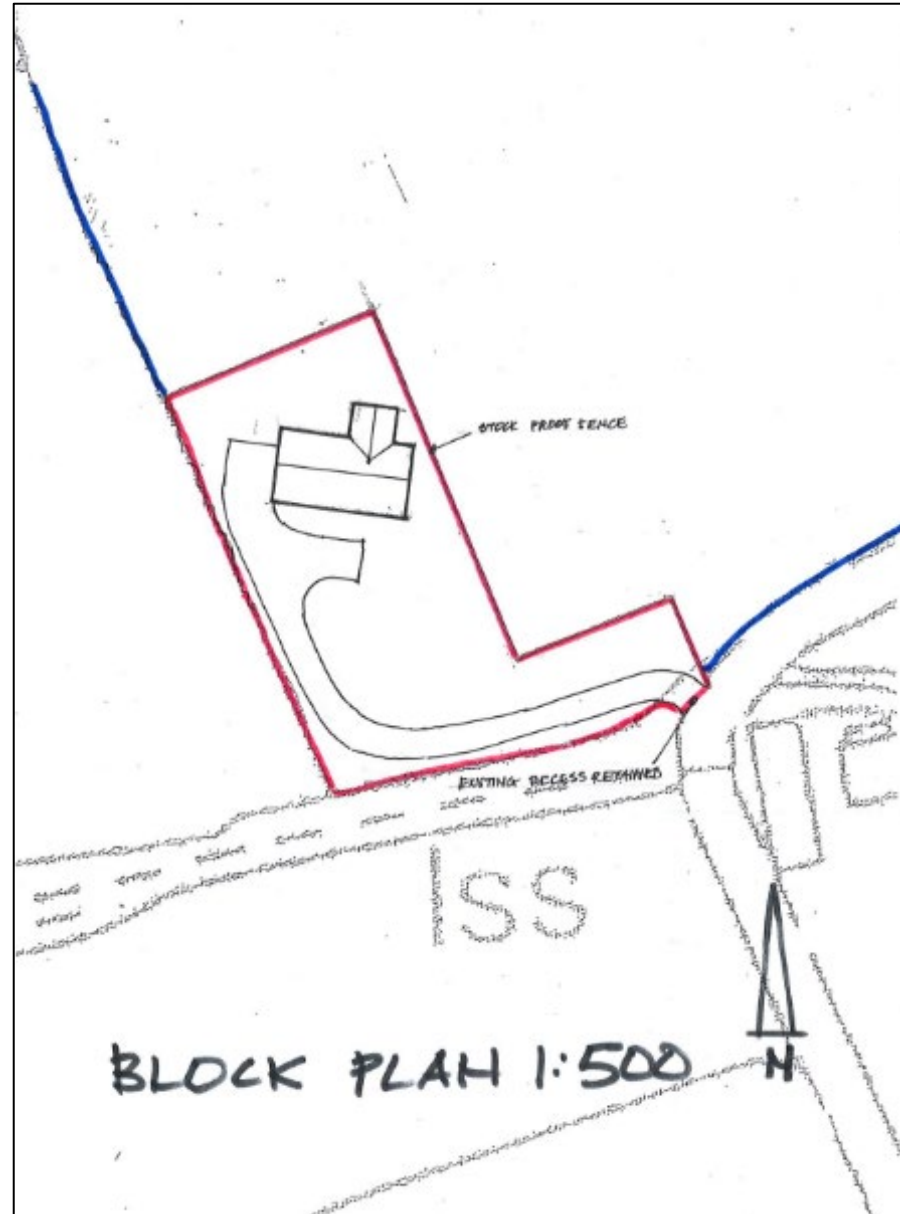
Tudalen 33





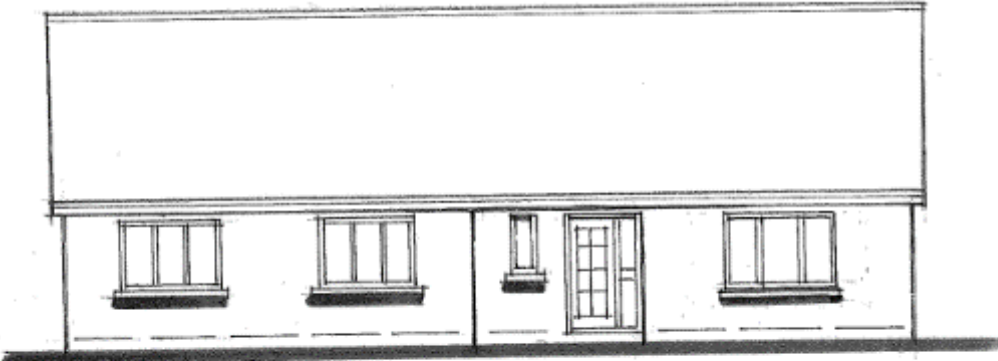


# PL/05786 – Proposed Block Plan

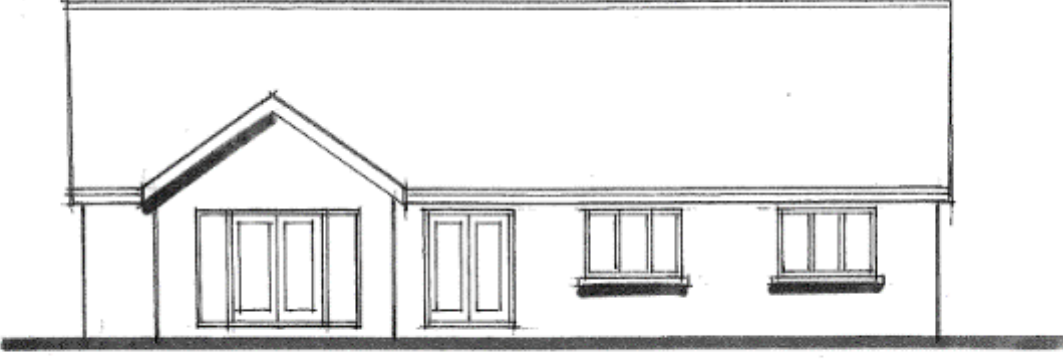




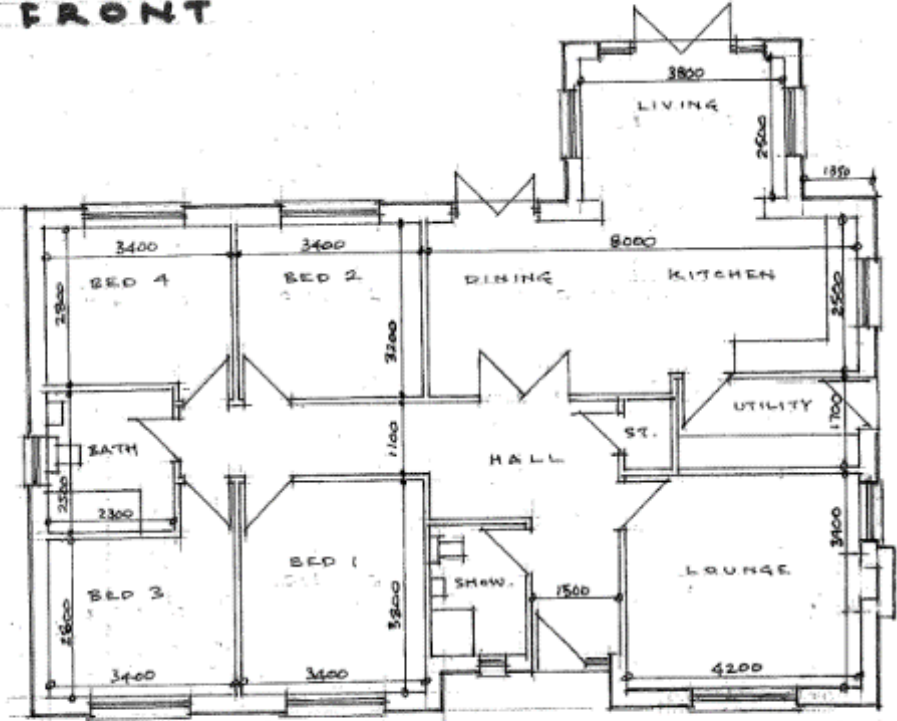
# PL/05786 – Proposed Elevations and Floor Plan



FRONT

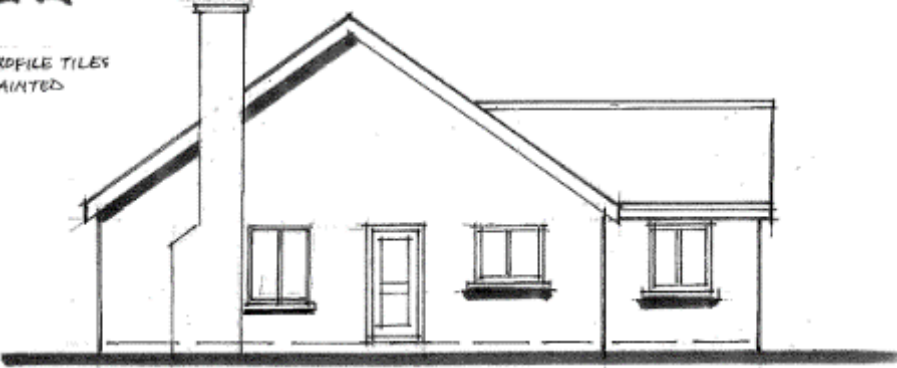


REAR



FLOOR PLAN

FINISHES:-  
ROOF - DARK GREY FLAT PROFILE TILES  
WALLS - SMOOTH RENDER PAINTED  
WINDOWS - UPVC GREY



SIDE



# PL/05786 –Site Photographs





# PL/05786 –Site Photographs





# PL/05786 –Site Photographs





# PL/05786 –Site Photographs



Tudalen 40

# PL/05786 –Site Photographs



Tudalen 41



# PL/05786 –Site Photographs









**Diolch | Thank you**

Tudalen 44

**[sirgar.llyw.cymru](http://sirgar.llyw.cymru)**

**[carmarthenshire.gov.wales](http://carmarthenshire.gov.wales)**

Cyngor **Sir Gâr**  
**Carmarthenshire**  
County Council

